

020-0850
e-LOCKING
Pull Handle



TriMarks' NEW 020-0850 e-LOCKING Pull Handle for off-road applications allows power locking/unlocking via a switch, remote RF FOB or keypad. Based on the proven 020-0800, this robust pull handle brings a new automotive function and convenience to your cabs and enclosures.

DESIGNED FOR:

- Medium to heavy-duty agricultural and construction personnel doors
- Off-highway vehicle applications that require a direct release surface mounted exterior pull handle



TriMark Corporation

500 Bailey Avenue
P.O. Box 350
New Hampton, Iowa 50659
United States
Tel: 641-394-3188
Fax: 641-394-2392
1-800-447-0343
www.trimarkcorp.com

10002707 QM08
10002707 TS09



ISO 9001: 2008
ISO/TS 16949: 2009

TriMark Corporation

TriMark Europe

Cedar Court
Walker Road
Bardon Hill
Coalville LE67 1TU
United Kingdom
Tel: +44(0)1530 512460
Fax: +44(0)1530 512461
www.trimarkeu.com

427961 QM08
427961 UM



ISO 9001 : 2008
ISO 14001 : 2004

TriMark Europe Ltd.

FEATURES/BENEFITS:

- Provides for greater ease of operation (ergonomics) than conventional push button or paddle handles; includes gas-assist molded handle
- Provides the ability to remotely lock the exterior pull handle
- Handle is rigid when locked
- KeyOne™ Plus lock cylinder can be keyed alike with most single and reversible key systems
- Readily adaptable to a variety of door thickness with adjustable connecting link assembly
- PTC overload to protect motor against excessive heating



AVAILABLE:

- With perimeter gasket and spacers to facilitate mounting and provide resistance to water and dirt infiltration
- Non-power locking version

MATERIAL:

- Handle and base: glass reinforced nylon
- Threaded inserts: brass

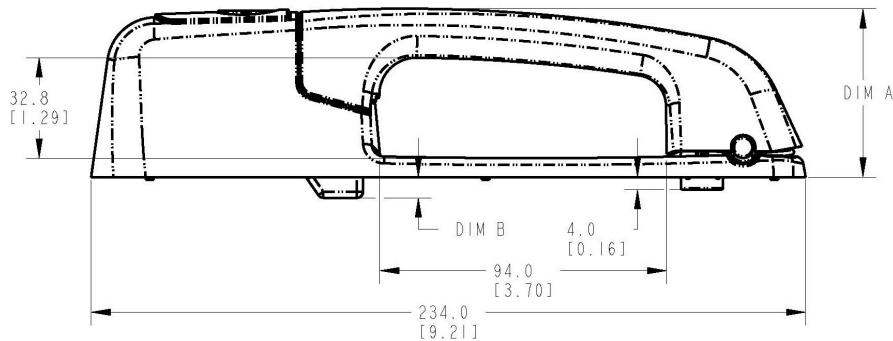
INSTALLATION:

- Same mounting pattern as 020-0800 Pull Handle — mounts against glass with only 2 holes or steel with conventional mounting
- Installed with (3) M6 X 1.0 bolts (not included)
- Recommended mounting fastener torque to be 5.6 -6.7 N-m (50-59 lbf-in)
- Wire length is 200mm
- Connector customization is available

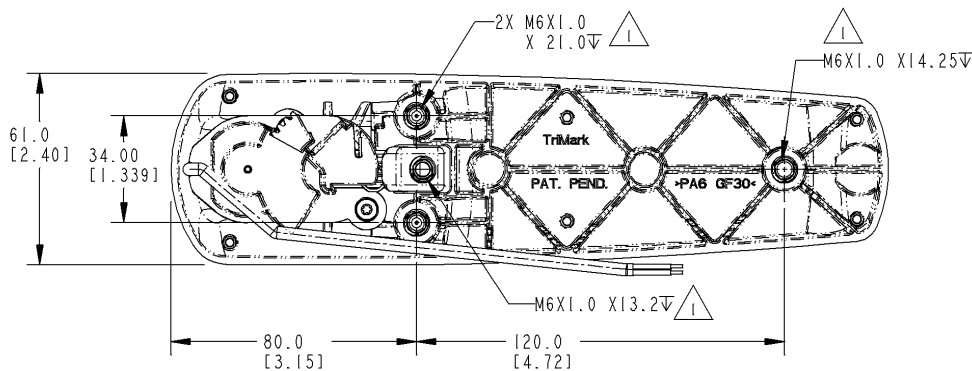
U.S. Patent No. 7,819,440

Individual part dimensions are for reference only. Refer to individual part drawings for complete dimensions, specifications, and installation procedures. Engineering assistance and application drawings are available.

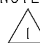
Caution: Product does not meet the locking requirements for FMVSS 206.



BASE OPTION	DIM A	DIM B
STD (HEIGHT OPTION 1)	55.0 [2.17]	6.7 [0.26]
THICK (HEIGHT OPTION 2)	61.1 [2.41]	0.6 [0.02]

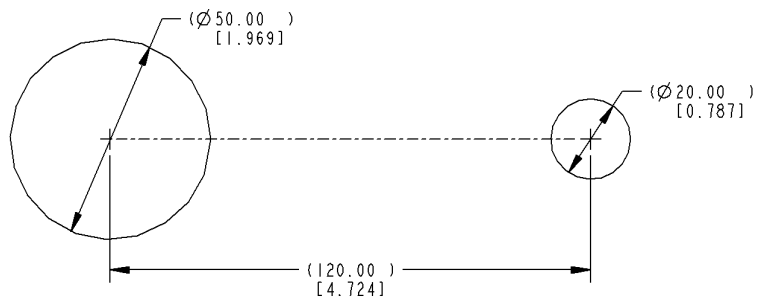
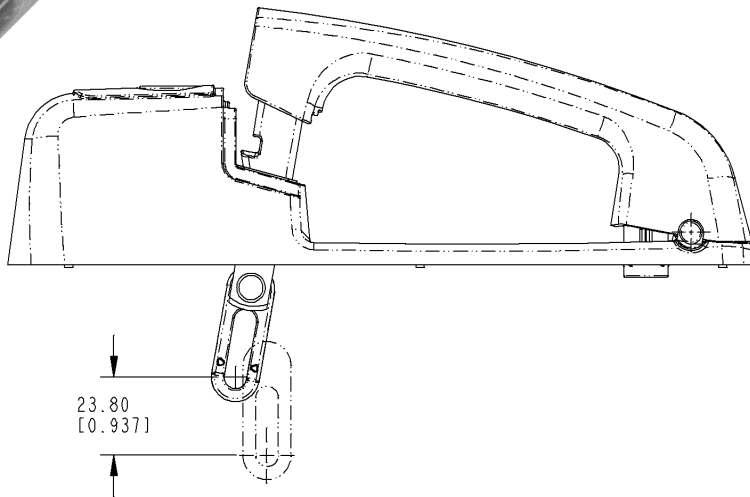


NOTES: UNLESS OTHERWISE SPECIFIED;

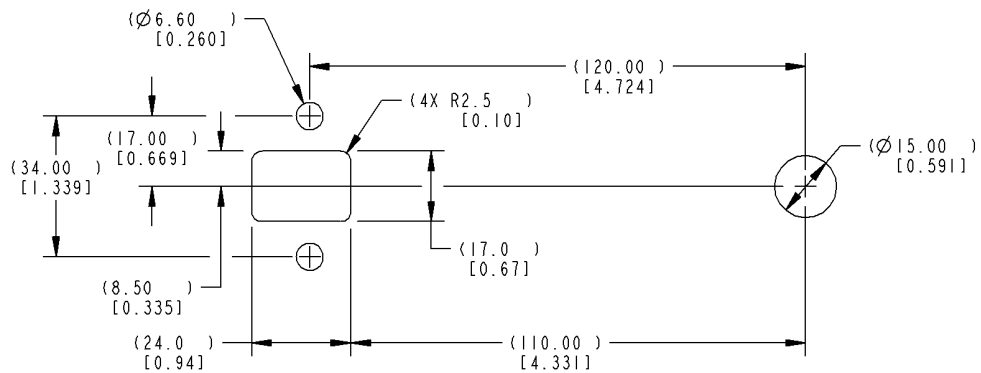
 RECOMMENDED APPLICATION TORQUE TO BE 5.6-6.7 N-m [50-59 LBF-IN].



For more information visit
www.trimarkcorp.com



RECOMMENDED GLASS MOUNTING
 DOOR CUTOUT DETAIL



RECOMMENDED STEEL MOUNTING
 DOOR CUTOUT DETAIL